

A little while you wait task

$\text{Cone} \times \text{Cone} \times \text{Cone} = 27$

$\text{Cone with 1 white scoop} + \text{Cone with 1 white scoop} = 10$

$\text{Cone with 2 white scoops} + \text{Cone with 1 pink scoop} = 11$

$\text{Cone with 1 white scoop} + \text{Cone} + \text{Cone with 1 white scoop and 2 pink scoops} = 15$

Legend:

- $\text{Cone} = ?$
- $\text{White Scoop} = ?$
- $\text{Pink Scoop} = ?$

dudolf.com

Meet the Teachers!

Year 2
September 2023



THAMESIDE
SCHOOL



Our school vision

'Every Child, Every Chance, Every Day'

We want our children to be confident and independent, have a love of learning and to care about themselves, other people and the world around them.

OUR VISION IS TO NURTURE LIFE-LONG LEARNERS WHO ARE ASPIRATIONAL, COURAGEOUS, CREATIVE AND KIND.

Throughout their time at Thameside, we will ensure every child has excellent opportunities with memorable and meaningful experiences which will inspire and challenge them at school while also preparing them for their future. Everything we do is underpinned by our values of respect, responsibility, resilience, resourcefulness and reflectiveness.



THAMESIDE
SCHOOL

WELCOME

The Year Two Team



THAMESIDE
SCHOOL

Miss O'Neill
Class teacher

Mrs Putt
Class teacher
Deputy
Headteacher
Maths Lead

Mrs McGowan
Teaching
Assistant
(mornings)

Miss Foster
Teaching
Assistant (1:1)

Our Curriculum Drivers



THAMESIDE
SCHOOL

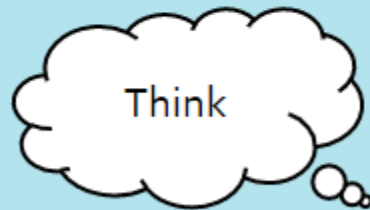
Talk



Read

Curriculum Drivers

Think



Link

Typical Weekly Timetable – will change as 3.15 finish!



	8.40-8:55 Morning Activities		8:55 Register		9.00-9.30	9:30-10:30	Break Time 10:30-10:50		10.50-11.40	11.40-12.00	Lunch Time 12:00		Session 3 1.00-2.00	Session 4 2.00-3.15		
Monday	8.40-8:55 Morning Activities		8:55 Register		Phonics	Writing	Break Time 10:30-10:50		Maths	Class Reading	Lunch Time 12:00		Science		Class Assembly-current affairs 2:40	Class Book 3:00
Tuesday	8.40-8:55 Morning Activities		8:55 Register		Phonics	Writing	Break Time 10:30-10:50		Maths	Retention/ Retrieval History	Lunch Time 12:00		DT/Art	R.E	Class Assembly - Learning to Learn 2:40	Class Book 3:00
Wednesday	8.40-8:55 Morning Activities		8:55 Register		Phonics	Writing	Break Time 10:30-10:50		Maths	Reading	Lunch Time 12:00		Geography/ History	PE	SLT Assembly 2:40	Class Book 3:00
Thursday	8.40-8:55 Morning Activities		8:55 Register		Phonics	Writing	Break Time 10:30-10:50		Maths	Retention/ Retrieval Art	Lunch Time 12:00		PE	PSHE	Celebration Assembly 2:40	Class Book 3:00
Friday	8.40-8:55 Morning Activities		8:55 Register		Phonics	Reading (DRICKY)	Break Time 10:30-10:50		Maths	Reading	Lunch Time 12:00		Computing	Music	Singing Assembly 2:40	Class Book 3:00

PE



THAMESIDE
SCHOOL

One indoor slot and one outdoor slot each week. Children will continue to come to school in PE kit on their PE days. PE will be on a Wednesday and Thursday.

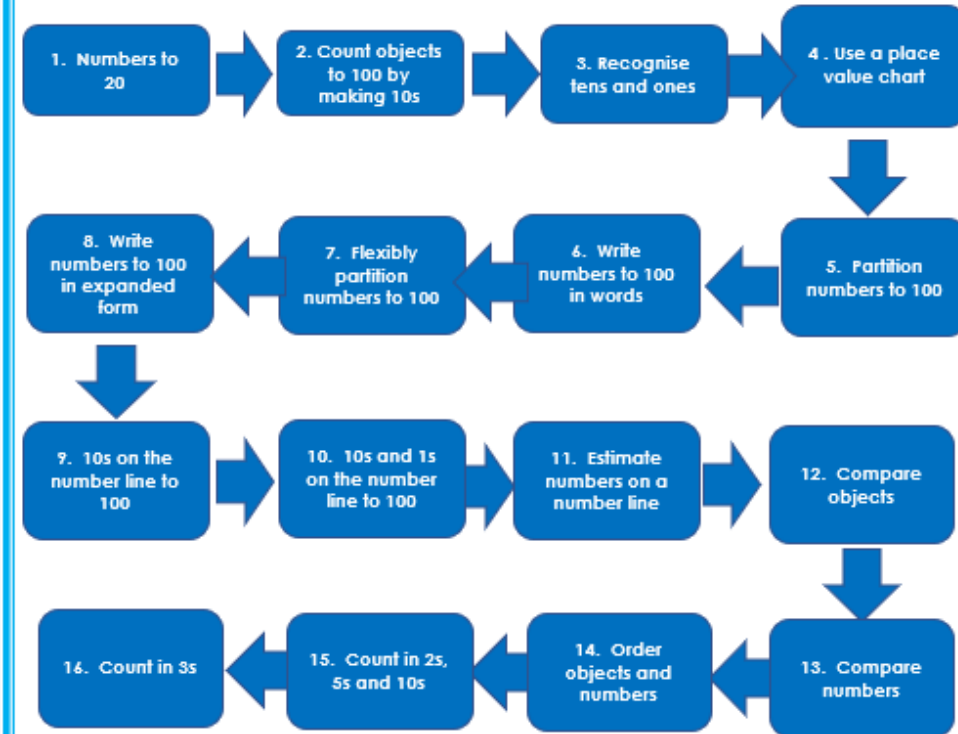
Unit cover sheets for children's books and termly overviews for parents



THAMESIDE
SCHOOL

Maths Term: Autumn Year 2
Unit: Place Value

Our Learning Journey:



Vocabulary:

partition	represent
estimate	pattern
order	expanded form
numerals	number line

The best ways to help at home:



Thameside Primary School - Families and Learning at home (thamesideschool.co.uk)



THAMESIDE
SCHOOL

How can families access support?

Thameside Primary School - Family Support, Mental Health and Wellbeing (thamesideschool.co.uk)

- HSLWs
- Welfare resources
- Just ask!

Any year group specific information

- Homework – format remains the same (one piece of English, one piece of Maths and daily reading)*

Any questions?

